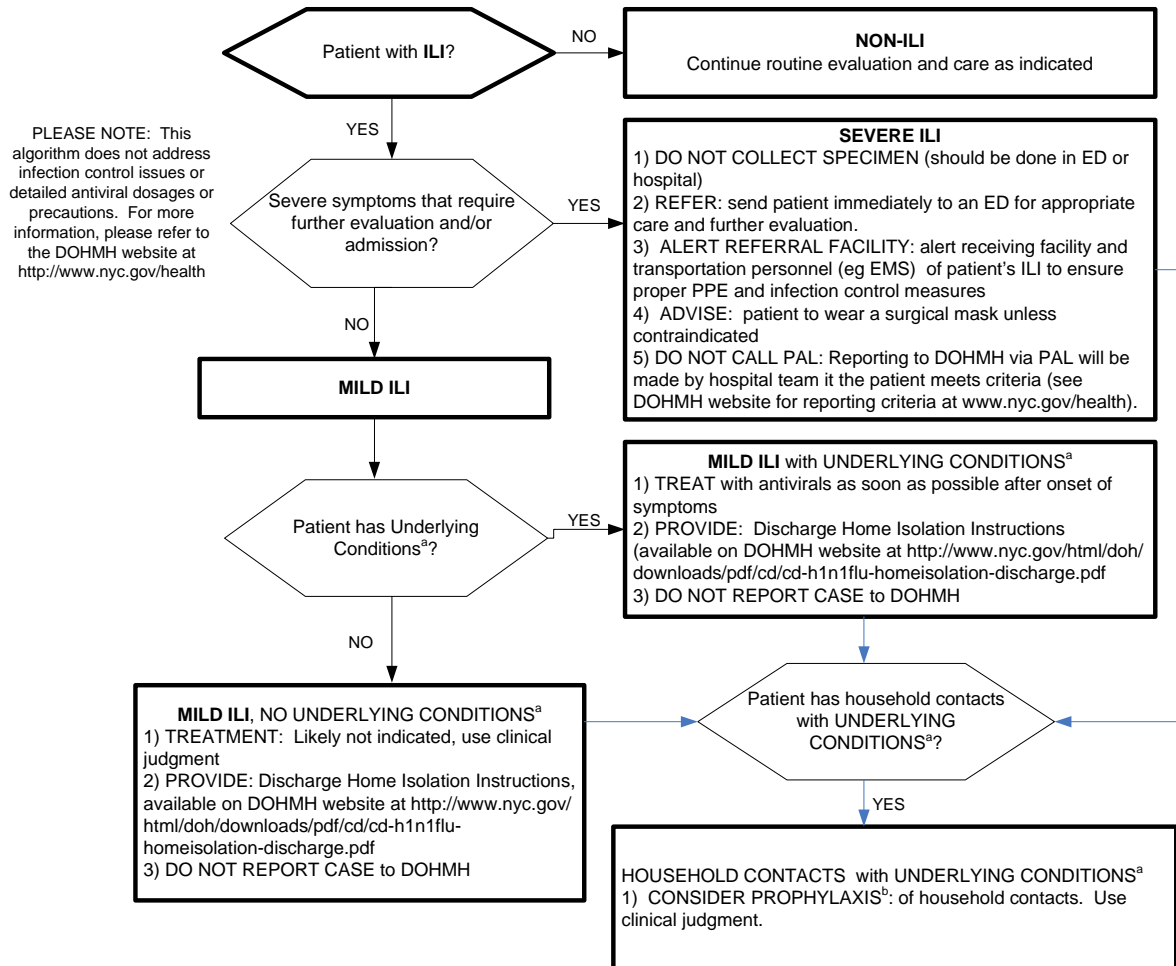


Outpatient Setting (Non-ED) Testing, Treatment and Prophylaxis Decision Algorithm for Patients Presenting with Influenza-Like Illness 5/22/09

Influenza-like Illness (ILI) = Fever (> 100.4°F or 38°C) AND cough or sore throat



^bANTIVIRAL PROPHYLAXIS DECISIONS:
Antiviral prophylaxis should be considered for:
1) CLOSE CONTACTS with underlying conditions OR;
2) HEALTH CARE WORKERS PROVIDING DIRECT PATIENT CARE WITH BREACH OF PPE OR WITH HOUSEHOLD OR CLOSE CONTACT to a person with ILI during their infectious period (one day before to 7 days after illness onset) should refer to their facility for guidance

^c PROVIDER ACCESS LINE (PAL): 1-866-NYC-DOH1

^aUNDERLYING CONDITIONS INCREASING RISK FOR COMPLICATIONS FROM INFLUENZA
Age > 65 years
Age < 2 years
Chronic pulmonary disease, such as asthma and COPD
Chronic cardiovascular, renal, and hepatic disease
Hematologic disease, such as sickle cell anemia
Metabolic disorders, such as diabetes
Immunosuppression, including HIV-related or caused by medication
Compromised respiratory function, and conditions which increase the risk for aspiration
Persons with neuromuscular disorders, seizure disorders, or cognitive dysfunction that may compromise the handling of respiratory secretions
Pregnancy
Persons requiring long-term aspirin therapy for diseases such as rheumatoid arthritis or Kawasaki disease